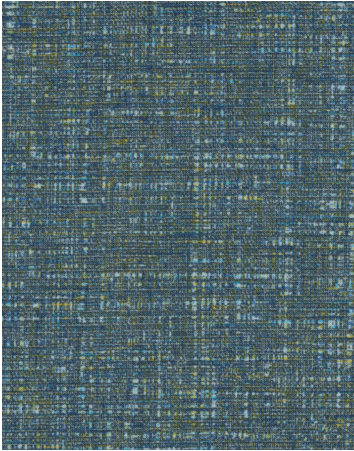


**BL | Vinyl****CLEANING CODE**

**WS:** Water/Solvent Cleaner - Spot clean with a mild solvent, an upholstery shampoo, or the foam from a mild detergent. When using a solvent or dry cleaning product, follow instructions carefully and clean only in a well-ventilated room. Avoid any product that contains carbon tetrachloride or other toxic materials. With either method, pretest a small area before proceeding. Always rinse promptly with clean water.

**CFC:** Coated Fabrics Cleaning - When a spill/stain occurs wipe immediately with a clean dry cloth. Carefully remove the majority of the stain then follow the steps below.

**Soap & Water** - Remove ordinary dirt and smudges with a mild soap and water solution using a soft cloth or towel. Rinse with fresh water and wipe dry.

**Non-abrasive Cleaners** - If residue remains, use a straight application of the following cleaners: Fantastik or 409 and gently clean with a soft cloth. Rinse with fresh water and wipe dry.

**Isopropyl Alcohol** - More stubborn stains may be eliminated using a cotton cloth soaked in 70-91% isopropyl (rubbing) alcohol. Wipe without spreading stain to surrounding area. A second application should be applied with vigorous rubbing in a circular motion. For highly textured material, a soft brush is recommended to clean valleys and crevices. Rinse with fresh water and wipe dry.

**BC:** Bleach Cleanable - 1 parts bleach, 9 parts water = 10% bleach, 90% water solution. Do not clean / disinfect fabric for longer than 10 minutes using the 10% bleach solution. Always rinse promptly with clean water after applying the bleach solution. Failure to do so will void any and all warranties.

Please note: If specific cleaners are not listed, then the pattern has not been tested for cleaning solution compatibility.

**DISINFECTANTS AND CLEANERS**

**BLEACH (RATIO OF WATER TO BLEACH)** See the bleach c... – Approved - No Effect

**CAVIWIPES XL** – Approved - No Effect

**CLOROX BROAD SPECTRUM QUATERNARY DISINFECTANT CLEA...** – Approved - No Effect

CLOROX DISINFECTING WIPE – Approved - No Effect  
CLOROX HEALTHCARE BLEACH GERMICIDAL CLEANER – Approved - No Effect  
CLOROX HYDROGEN PEROXIDE CLEANER DISINFECTANT SPRA... – Approved - No Effect  
CLOROX HEALTHCARE HYDROGEN PEROXIDE CLEANER DISINF... – Approved - No Effect  
OXIVIR FIVE 16 – Approved - No Effect  
OXIVIR TB – Approved - No Effect  
SANI CLOTH PLUS GERMICIDAL WIPES (RED LID) – Approved - No Effect  
SUPER SANI CLOTH GERMICIDAL WIPES (PURPLE LID) – Approved - No Effect  
VIREX II 256- CONCENTRATE – Approved - No Effect  
OXIVIR TB WIPES – Approved - No Effect  
PERISEPT 62 SPORICIDAL DISINFECTANT – Approved - No Effect  
OXIVIR 1 WIPES – Approved - No Effect  
ECOLAB DISINFECTANT 1 WIPE – Approved - Moderate Effect

KEY	DEFINITION
Approved   No Effect	No change in color or surface finish.
Approved   Slight Effect	A change in color or surface finish only visible at certain angles.
Approved   Moderate Effect	A change in color or surface finish visible from all angles and directions, but does not appreciably alter the original condition of the material.
Not Approved   Severe Effect	A change in color or surface finish, which obviously and markedly alters the original condition of the specimen.

The results for the cleaners/disinfectants listed does not imply "approved" or that the results are guaranteed. These evaluations are indicators after laboratory testing and may not be indicative of field performance. Customers should first determine if products are appropriate for use on their surfaces. The majority of today's disinfectant chemistries are mainly designed for use on hard environmental surfaces such as ceramic, porcelain, laminate, steel etc. After each application these types of disinfectants on seating surfaces the surface must be wiped with clean water and dried with a clean towel to remove any chemical residue that could eventually discolor or degrade the material surface.

Failure to follow the above dilution recommendations, directions when using using these types of cleaners/disinfectants or the application of a clean water rinse after each application can expedite a product failure and will void any warranty claim.