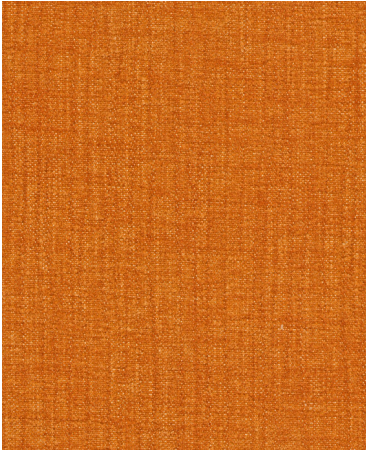


472 | Upholstery**CLEANING CODE**

WS: Water/Solvent Cleaner - Spot clean with a mild solvent, an upholstery shampoo, or the foam from a mild detergent. When using a solvent or dry cleaning product, follow instructions carefully and clean only in a well-ventilated room. Avoid any product that contains carbon tetrachloride or other toxic materials. With either method, pretest a small area before proceeding. Always rinse promptly with clean water.

BC: Bleach Cleanable - 1 parts bleach, 9 parts water = 10% bleach, 90% water solution. Do not clean / disinfect fabric for longer than 10 minutes using the 10% bleach solution. Always rinse promptly with clean water after applying the bleach solution. Failure to do so will void any and all warranties.

Please note: If specific cleaners are not listed, then the pattern has not been tested for cleaning solution compatibility.

DISINFECTANTS AND CLEANERS

CLOROX HEALTHCARE BLEACH GERMICIDAL WIPE – Approved - No Effect

CLOROX HYDROGEN PEROXIDE CLEANER DISINFECTANT SPRA... – Approved - No Effect

OXIVIR TB – Approved - No Effect

ECOLAB NEUTRAL DISINFECTANT CLEANER – Approved - No Effect

PURELL FOOD SERVICE SANITIZER – Approved - No Effect

CAVIWIPES – Approved - No Effect

SANI CLOTH AF3 GERMICIDAL WIPES (GREY LID) – Approved - No Effect

SANI CLOTH BLEACH GERMICIDAL WIPES (ORANGE LID) – Approved - No Effect

SANI-PROFESSIONAL MULTI SURFACE WIPES – Approved - No Effect

SANI-PROFESSIONAL TABLE TURNERS WIPES – Approved - No Effect

SUPER SANI CLOTH GERMICIDAL WIPES (PURPLE LID) – Approved - No Effect

LYSOL SPRAY DISINFECTANT – Approved - No Effect

OPTIM 33 TB DISINFECTANT (ALTERNATE FOR ACCEL TB) – Approved - No Effect

ACCEL TB – Approved - No Effect

VIREX II 256- CONCENTRATE – Not Approved - Severe Effect

KEY	DEFINITION
Approved No Effect	No change in color or surface finish.
Approved Slight Effect	A change in color or surface finish only visible at certain angles.
Approved Moderate Effect	A change in color or surface finish visible from all angles and directions, but does not appreciably alter the original condition of the material.
Not Approved Severe Effect	A change in color or surface finish, which obviously and markedly alters the original condition of the specimen.

The results for the cleaners/disinfectants listed does not imply "approved" or that the results are guaranteed. These evaluations are indicators after laboratory testing and may not be indicative of field performance. Customers should first determine if products are appropriate for use on their surfaces. The majority of today's disinfectant chemistries are mainly designed for use on hard environmental surfaces such as ceramic, porcelain, laminate, steel etc. After each application these types of disinfectants on seating surfaces the surface must be wiped with clean water and dried with a clean towel to remove any chemical residue that could eventually discolor or degrade the material surface.

Failure to follow the above dilution recommendations, directions when using using these types of cleaners/disinfectants or the application of a clean water rinse after each application can expedite a product failure and will void any warranty claim.