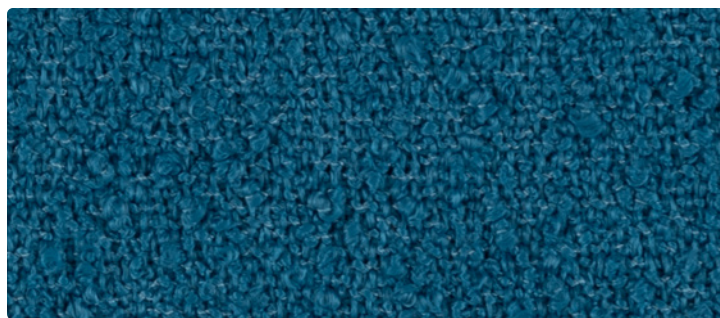


BELIZE



326-007
Shell



326-034
Lagoon



326-017
Shoreline



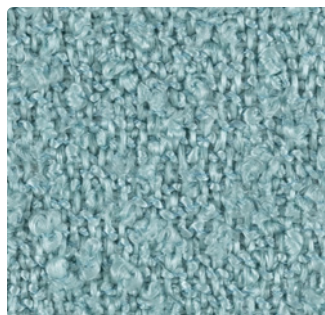
326-003
Palm



326-002
Dijon



326-000
Driftwood

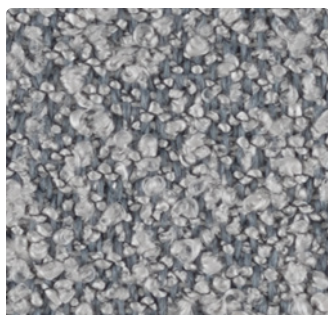


326-024
Seaside



326-011
Oleander

Upholstery
91% Recycled Olefin,
9% Polyester
54 inches / 137 cm
Exceeds 100,000 Double Rubs
Stain Repellent - PFAS Free
GREENGUARD Gold Certified



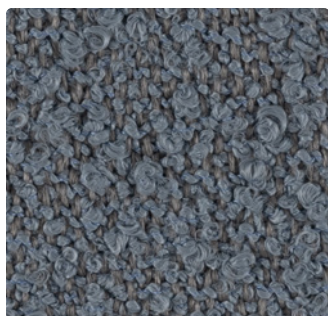
326-006
Haze



326-014
Tidal



326-009
Papaya



326-016
Fog



326-004
Admiral



326-001
Hibiscus

BELIZE

TECHNICAL INFORMATION

Application: Upholstery

Content: 91% Recycled Olefin, 9% Polyester

Backing: Acrylic

Weight: 23.56 oz./linear yard / 730.44 g/lm

Width: 54 inches / 137 cm

Finish: Stain Repellent - PFAS Free

Approx. Repeat: None

Directional: Yes

Shown Railroaded: No

PERFORMANCE

Abrasion: Exceeds 100,000 Double Rubs
(Wyzenbeek/Wire Screen)

Abrasion test results exceeding ACT Performance Guidelines are not an indicator of product lifespan. Multiple factors affect durability and appearance retention.

Crocking: Dry: Grade 4 min / Wet: Grade 4 min

Colorfastness to Light ASTM G154 Cycle 1: 1500 hours
AATCC 16, Option 3: Grade 5 at 40 hours

FLAMMABILITY

California Technical Bulletin 117-2013
NFPA 260/UFAC Class 1

REDUCED ENVIRONMENTAL IMPACT

This product is GREENGUARD Gold Certified for low chemical and particle emissions to UL standard UL 2818 and may contribute to LEED certification. For complete information visit mayerfabrics.com.

No FR Additives No Antimicrobial/Antibacterial Additives PFAS Free

CLEANING INFORMATION

W: Water-Based Cleaner

BC: Bleach Cleanable –

1 part bleach, 9 parts water = 10% bleach, 90% water solution.

DYE TRANSFER DISCLAIMER

Certain clothing and accessory dyes (such as those used on denim jeans) may migrate to lighter colors. This phenomenon is increased by humidity and temperature and is irreversible. Mayer Fabrics will not assume responsibility for dye transfer caused by external contaminants. Please check compatibility when using this product in combination with painted or varnished surfaces.

ADDITIONAL INFORMATION

Custom Colors: All patterns can be custom colored. Minimum yardage applies. Warranty: Please refer to the Mayer website for warranty information by pattern.

Digital Swatch Card Color Matching: Due to color variations on different monitors and color printers, actual swatch colors may vary slightly. Please request a memo sample from Mayer Fabrics to ensure proper color representation.

Complete and current product information available at mayerfabrics.com.



MAYERFABRICS



326CD ©2024 50624

T 800.428.4415 mayerfabrics.com
500 S. Kitley Ave. Indianapolis, IN 46219