

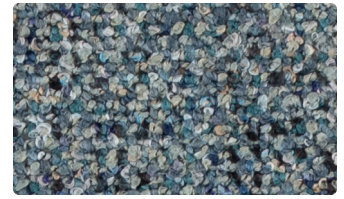
FLECK



474-007
Tundra



474-002
Honey



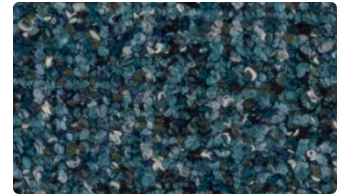
474-004
Waterfall



474-017
Dune



474-012
Umber



474-014
Baltic



474-027
Heron



474-009
Maple



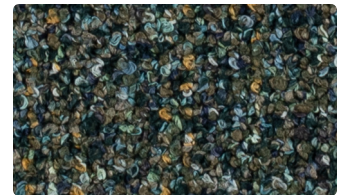
474-024
Tidal



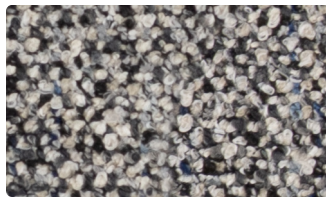
474-006
Pewter



474-019
Bittersweet



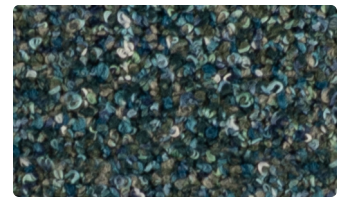
474-003
Mallard



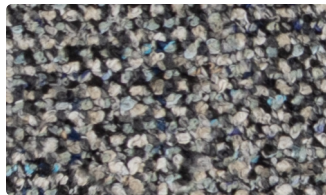
474-016
Piano



474-029
Sandstone



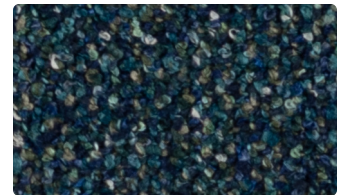
474-013
Raintree



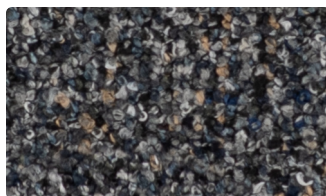
474-026
Carbon



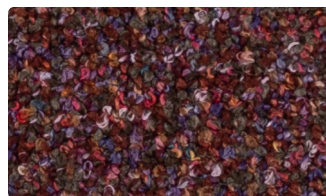
474-001
Flare



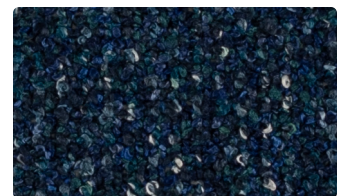
474-034
Lagoon



474-036
Peppercorn



474-008
Wildberry



474-044
Midnight

Upholstery
94% Polyester, 4% TPU,
2% Silicone
54 inches / 137 cm
Exceeds 100,000 Double Rubs
Supreen (Silicone) - PFAS Free
GREENGUARD Gold Certified

FLECK

TECHNICAL INFORMATION

Application: Upholstery

Content: 94% Polyester, 4% TPU, 2% Silicone

Backing: Fluid Barrier (Supreen) TPU

Weight: 19.7 oz./linear yard / 610.77 g/lm

Width: 54 inches / 137 cm

Finish: Supreen (Silicone) - PFAS Free

Approx. Repeat: None

Directional: No

Shown Railroaded: No

PERFORMANCE

Abrasion: Exceeds 100,000 Double Rubs (Wyzenbeek/Cotton Duck)
Abrasion test results exceeding ACT Performance Guidelines are not an indicator of product lifespan. Multiple factors affect durability and appearance retention.

Crocking: Dry: Grade 4 min. / Wet: Grade 4 min.

Colorfastness to Light AATCC 16, Option 3: Grade 4 at 40 hours

FLAMMABILITY

California Technical Bulletin 117-2013
NFPA 260/UFAC Class 1

REDUCED ENVIRONMENTAL IMPACT

This product is GREENGUARD Gold Certified for low chemical and particle emissions to UL standard UL 2818 and may contribute to LEED certification. For complete information visit mayerfabrics.com.

No FR Additives No Antimicrobial/Antibacterial Additives PFAS Free

CLEANING INFORMATION

WS: Water/Solvent Cleaner
BC: Bleach Cleanable –
1 part bleach, 9 parts water = 10% bleach, 90% water solution.

DYE TRANSFER DISCLAIMER

Certain clothing and accessory dyes (such as those used on denim jeans) may migrate to lighter colors. This phenomenon is increased by humidity and temperature and is irreversible. Mayer Fabrics will not assume responsibility for dye transfer caused by external contaminants. Please check compatibility when using this product in combination with painted or varnished surfaces.

ADDITIONAL INFORMATION

Custom Colors: All patterns can be custom colored. Minimum yardage applies.
Warranty: Please refer to the Mayer website for warranty information by pattern.
Digital Swatch Card Color Matching: Due to color variations on different monitors and color printers, actual swatch colors may vary slightly. Please request a memo sample from Mayer Fabrics to ensure proper color representation.
Complete and current product information available at mayerfabrics.com.



MAYERFABRICS

