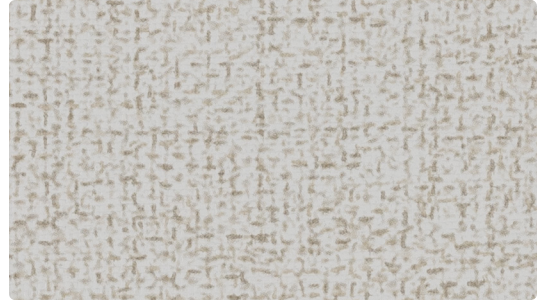




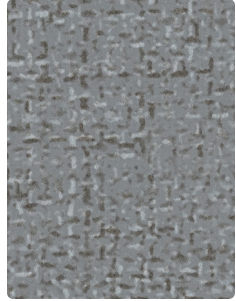
LH-027
Pebble



LH-017
Burlap



LH-007
Alabaster



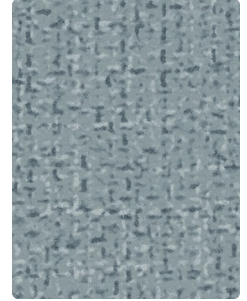
LH-006
Gunmetal



LH-002
Amber



LH-010
Burnish



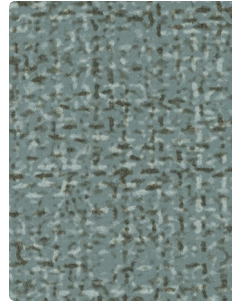
LH-004
Dew Drop



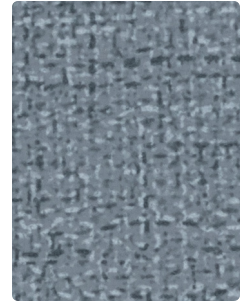
LH-016
Bedrock



LH-000
Cappuccino



LH-003
Aloe



LH-014
Chambray



LH-026
Coal



LH-009
Harvest



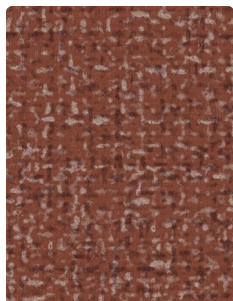
LH-013
Ivy



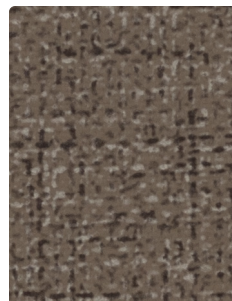
LH-024
Rainstorm



LH-036
Galaxy



LH-001
Rustic Red



LH-020
Walnut



LH-034
Lapis

Upholstery
62% Polyurethane Polycarbonate -
PVC Free/3% Silicone face,
35% Polyester backing
54 inches / 137 cm
Exceeds 250,000 Double Rubs
WRITE AWAY® - Soil & Stain
Resistant Top Coat with Ink
Resistant Technology
GREENGUARD Gold Certified

TECHNICAL INFORMATION

Application: Upholstery

Content: 62% Polyurethane Polycarbonate - PVC Free/3% Silicone face,
35% Polyester backing

Backing: Polyester

Weight: 19 oz./linear yard / 589.06 g/lm

Width: 54 inches / 137 cm

Finish: WRITE AWAY® - Soil & Stain Resistant Top Coat with Ink Resistant
Technology

Approx. Repeat: None

Directional: No

Shown Railroaded: No

PERFORMANCE 

Abrasion: Exceeds 250,000 Double Rubs
(Wyzenbeek/Cotton Duck)

Abrasion test results exceeding ACT Performance Guidelines are not an indicator of product lifespan. Multiple factors affect durability and appearance retention.

Crocking: Dry: Grade 5 / Wet: Grade 5

Colorfastness to Light: AATCC 16, Option 3: Grade 5 at 200 hours

Hydrolysis Resistance: 15 weeks

FLAMMABILITY

California Technical Bulletin 117-2013
NFPA 260/UFAC Class 1

REDUCED ENVIRONMENTAL IMPACT

This product is GREENGUARD Gold Certified for low chemical and particle emissions to UL standard UL 2818 and may contribute to LEED certification. For complete information visit mayerfabrics.com.

No FR Additives No Antimicrobial/Antibacterial Additives PFAS Free

CLEANING INFORMATION

WS: Water/Solvent Cleaner

BC: Bleach Cleanable –

1 part bleach, 9 parts water = 10% bleach, 90% water solution.

CFC: Coated Fabrics Cleaning – Refer to Mayer website for complete cleaning info.

DYE TRANSFER DISCLAIMER

Certain clothing and accessory dyes (such as those used on denim jeans) may migrate to lighter colors. This phenomenon is increased by humidity and temperature and is irreversible. Mayer Fabrics will not assume responsibility for dye transfer caused by external contaminants. Please check compatibility when using this product in combination with painted or varnished surfaces.

ADDITIONAL INFORMATION

Custom Colors: All patterns can be custom colored. Minimum yardage applies.
Warranty: Please refer to the Mayer website for warranty information by pattern.
Digital Swatch Card Color Matching: Due to color variations on different monitors and color printers, actual swatch colors may vary slightly. Please request a memo sample from Mayer Fabrics to ensure proper color representation.
Complete and current product information available at mayerfabrics.com.

