

1. The first part of the document discusses the importance of maintaining accurate records of all transactions and activities. It emphasizes the need for transparency and accountability in financial reporting. The text outlines the various methods used to collect and analyze data, ensuring that the information is reliable and up-to-date.

2. The second section focuses on the implementation of internal controls to prevent fraud and errors. It details the roles and responsibilities of different departments and individuals within the organization. The document also discusses the importance of regular audits and reviews to identify and address any weaknesses in the system.

3. The third part of the document addresses the challenges of managing a large and diverse workforce. It highlights the need for effective communication and collaboration between team members. The text provides strategies for fostering a positive work environment and promoting employee engagement and productivity.

4. The fourth section discusses the impact of external factors on the organization's performance. It analyzes the market conditions, regulatory changes, and technological advancements that may affect the business. The document offers insights into how the organization can adapt to these changes and maintain its competitive edge.

5. The final part of the document provides a summary of the key findings and recommendations. It emphasizes the importance of continuous improvement and innovation in the face of a rapidly changing business landscape. The document concludes with a call to action for all stakeholders to work together to achieve the organization's long-term goals.

SEQUOIA



WC738-007
Birch



WC738-006
Ebony



WC738-009
Autumn

Shown at approximately 50% scale.
Due to color variations in printing, actual swatch colors may vary slightly.

SEQUOIA



WC738-003
Bamboo



WC738-004
Raindrop



WC738-014
Indigo

Shown at approximately 50% scale.
Due to color variations in printing, actual swatch colors may vary slightly.

SEQUOIA

TECHNICAL INFORMATION

Application: Upholstery

Content: 100% Polyester

Backing: Crypton® Moisture Barrier

Weight: 16.08 oz./linear yard / 498.53 g/lm

Width: 54 inches / 137 cm

Finish: Crypton®

Approx. Repeat: 14 in/35.56 cm H, 21.25 in/53.98 cm V Random Match

Directional: Yes

Shown Railroaded: No

PERFORMANCE

Abrasion: Passes 100,000 Double Rubs
(Wyzenbeek/Cotton Duck)

Abrasion test results exceeding ACT Performance Guidelines are not an indicator of product lifespan. Multiple factors affect durability and appearance retention.

Crocking: Dry: Grade 4 min. / Wet: Grade 4 min.

Colorfastness to Light: Grade 4 at 40 hours

FLAMMABILITY

California Technical Bulletin 117-2013
NFPA 260/UFAC Class 1

REDUCED ENVIRONMENTAL IMPACT

This product is GREENGUARD Gold Certified for low chemical and particle emissions to UL standard UL 2818 and may contribute to LEED certification. For complete information visit mayerfabrics.com.

No FR Additives PFAS Free

CLEANING INFORMATION

C: Crypton Cleaning W: Water-Based Cleaner

BC: Bleach Cleanable –

1 part bleach, 9 parts water = 10% bleach, 90% water solution.

DYE TRANSFER DISCLAIMER

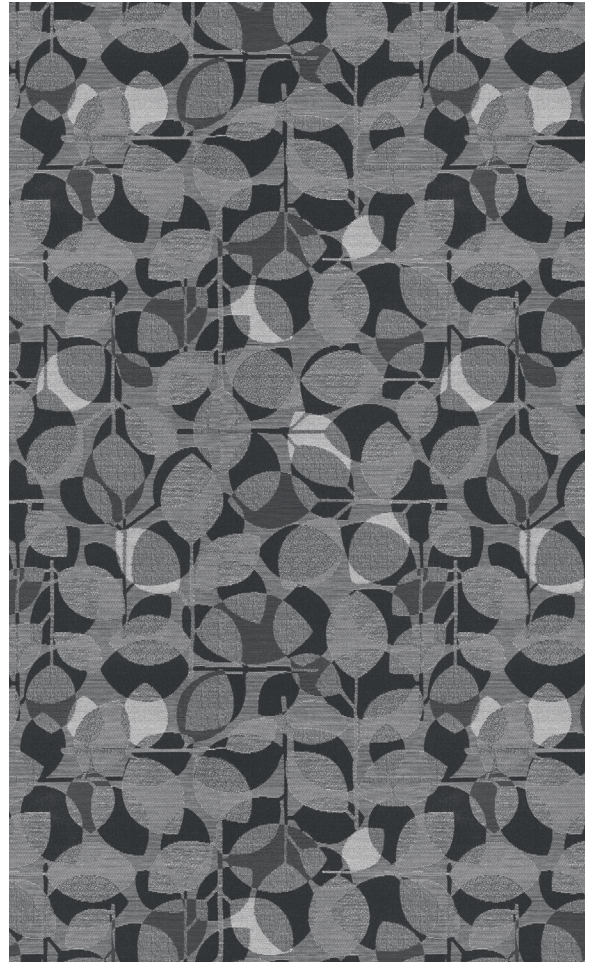
Certain clothing and accessory dyes (such as those used on denim jeans) may migrate to lighter colors. This phenomenon is increased by humidity and temperature and is irreversible. Mayer Fabrics will not assume responsibility for dye transfer caused by external contaminants. Please check compatibility when using this product in combination with painted or varnished surfaces.

ADDITIONAL INFORMATION

Custom Colors: All patterns can be custom colored. Minimum yardage applies. Warranty: Please refer to the Mayer website for warranty information by pattern. Complete and current product information available at mayerfabrics.com.



In support of The Common Thread for the Cure Foundation, Mayer Fabrics will donate a percentage of all sales to The Common Thread for the Cure.



WC738CD ©2024 51124

MAYERFABRICS

T 800.428.4415 mayerfabrics.com
500 S. Kitley Ave. Indianapolis, IN 46219